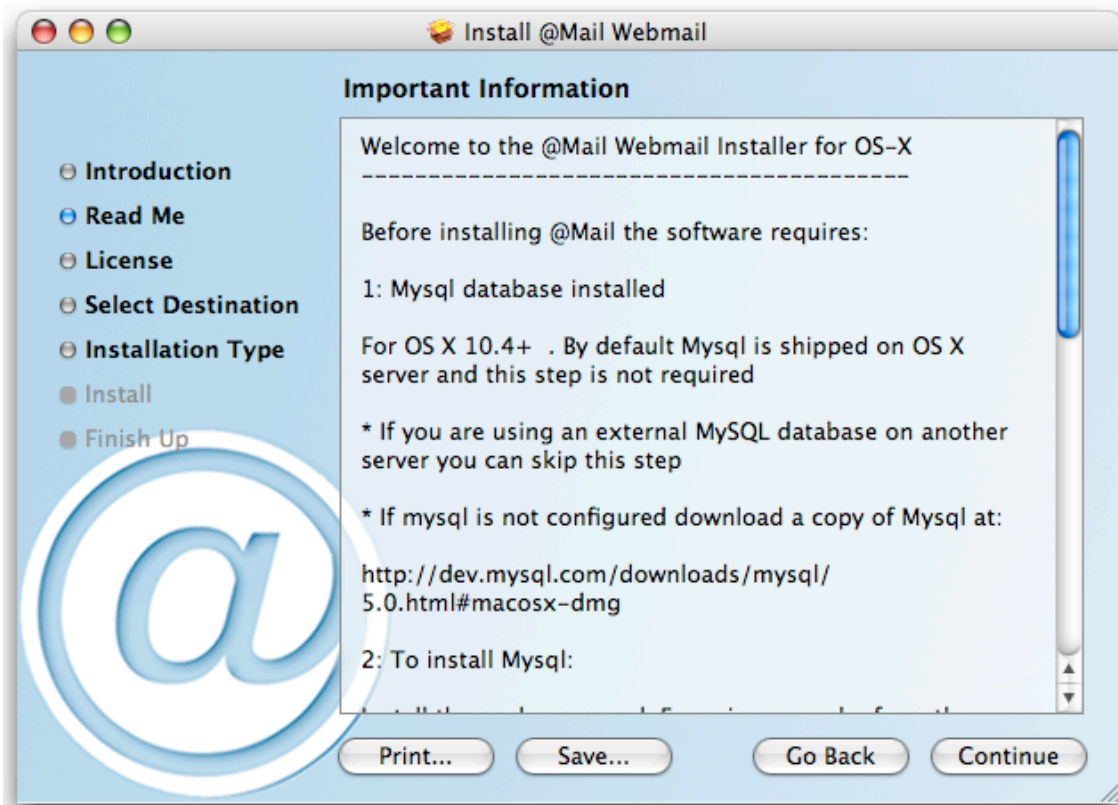


## @Mail WebMail - OS X installation Guide

@Mail provides a complete Webmail client for POP3/IMAP accounts. The system can be installed under OS X 10.4 (Leopard) and above. The install is a Universal binary compatible with PPC/Intel machines



Before installing @Mail the software requires:

### 1: Mysql database installed

For OS X 10.4+ . By default Mysql is shipped on OS X server and this step is not required

- If you are using an external MySQL database on another server you can skip this step
- If mysql is not configured download a copy of Mysql at:

<http://dev.mysql.com/downloads/mysql/5.0.html#macosx-dmg>

## 2: To install Mysql:

Install the package `mysql-5.version-osx.pkg` from the download site

Once mysql is installed you need to manually start and configure the database from the terminal. Open Terminal ( Under Applications > Utilities > Terminal ) and run:

```
# sudo su -  
( Type your admin password )
```

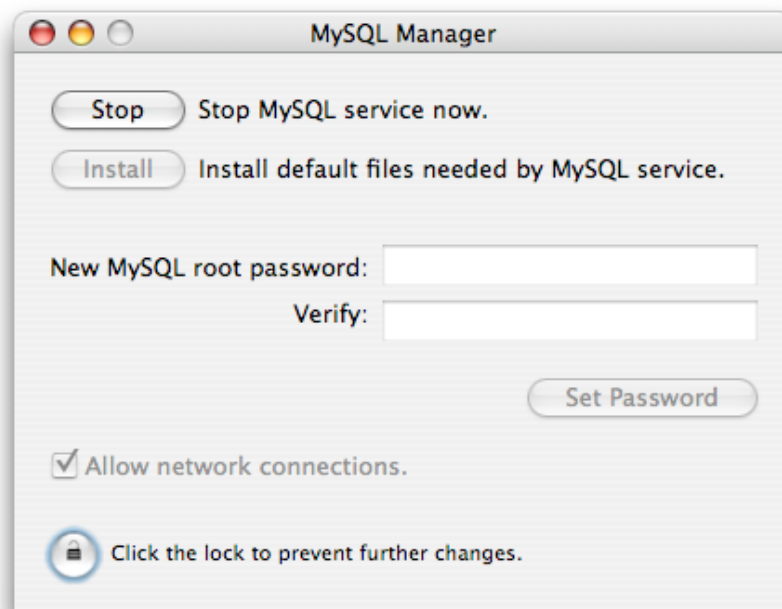
Then configure the database server as root

```
# cd /usr/local/mysql  
# ./configure
```

This will setup the default database name and Mysql will be successfully started. Install the startup utility from the MySQL installation image to start the service on boot.

### OS X 10.4 Server

If using OS X 10.4 server, the mysql database installation can be skipped, and activated via the (Applications > Server > MySQL Manager) control panel

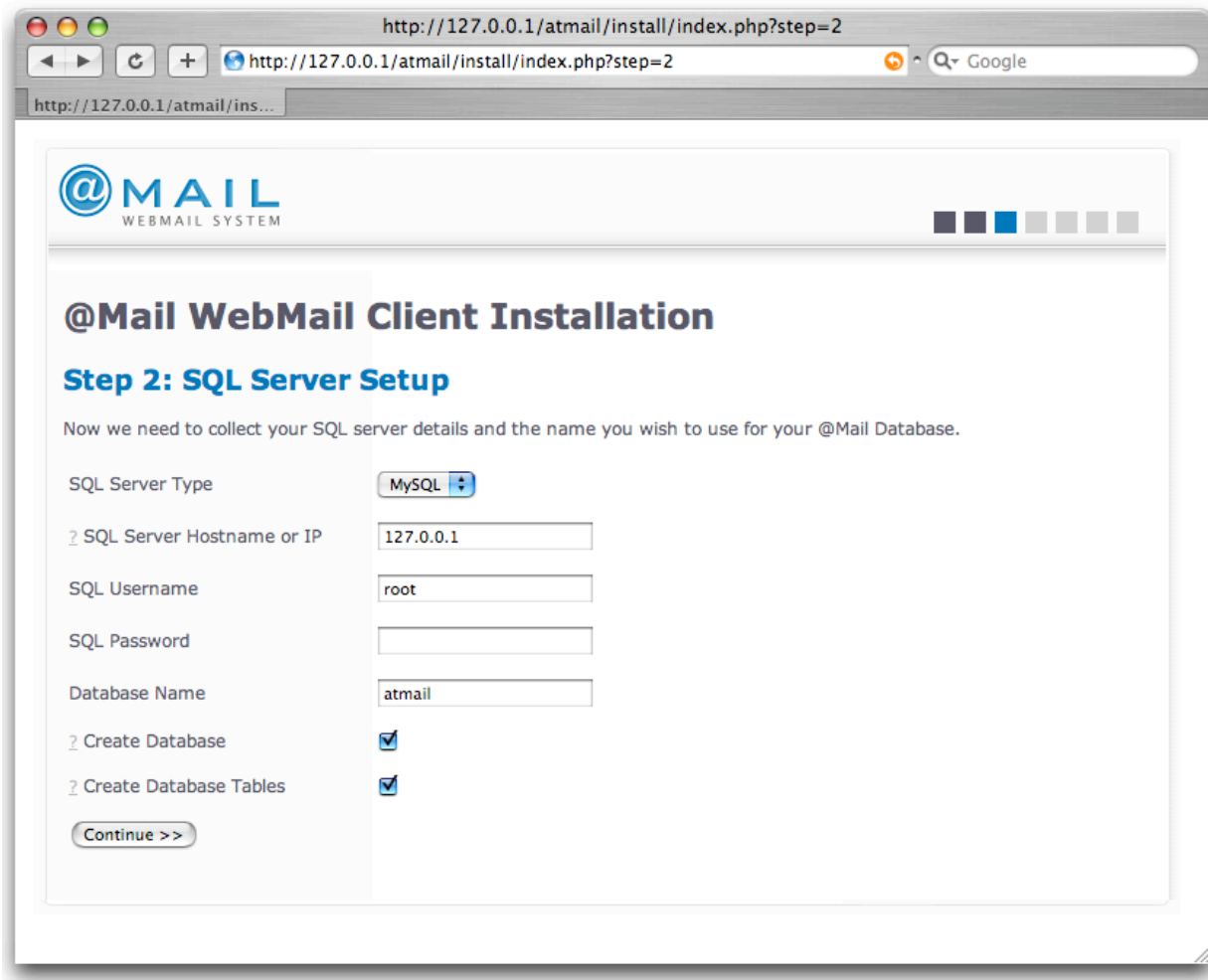


Activate the MySQL service if using OS X 10.4 server as above, check the “Allow network connections” option for @Mail to be able to communicate to MySQL

## Installation Details:

After installing the MySQL server, or configuring an existing MySQL server the installation continues for @Mail via the Web-based install utility.

You can connect to the mysql server using the username “root” and without a password, if you have installed the default MySQL database as above.



## External SMTP server to relay messages

@Mail requires access to an SMTP server to send outgoing messages. Enter your mail-server SMTP server here, and check you have relay access based on your IP. Otherwise use SMTP-authentication in the installation wizard and specify a username & password to relay messages via the SMTP server.

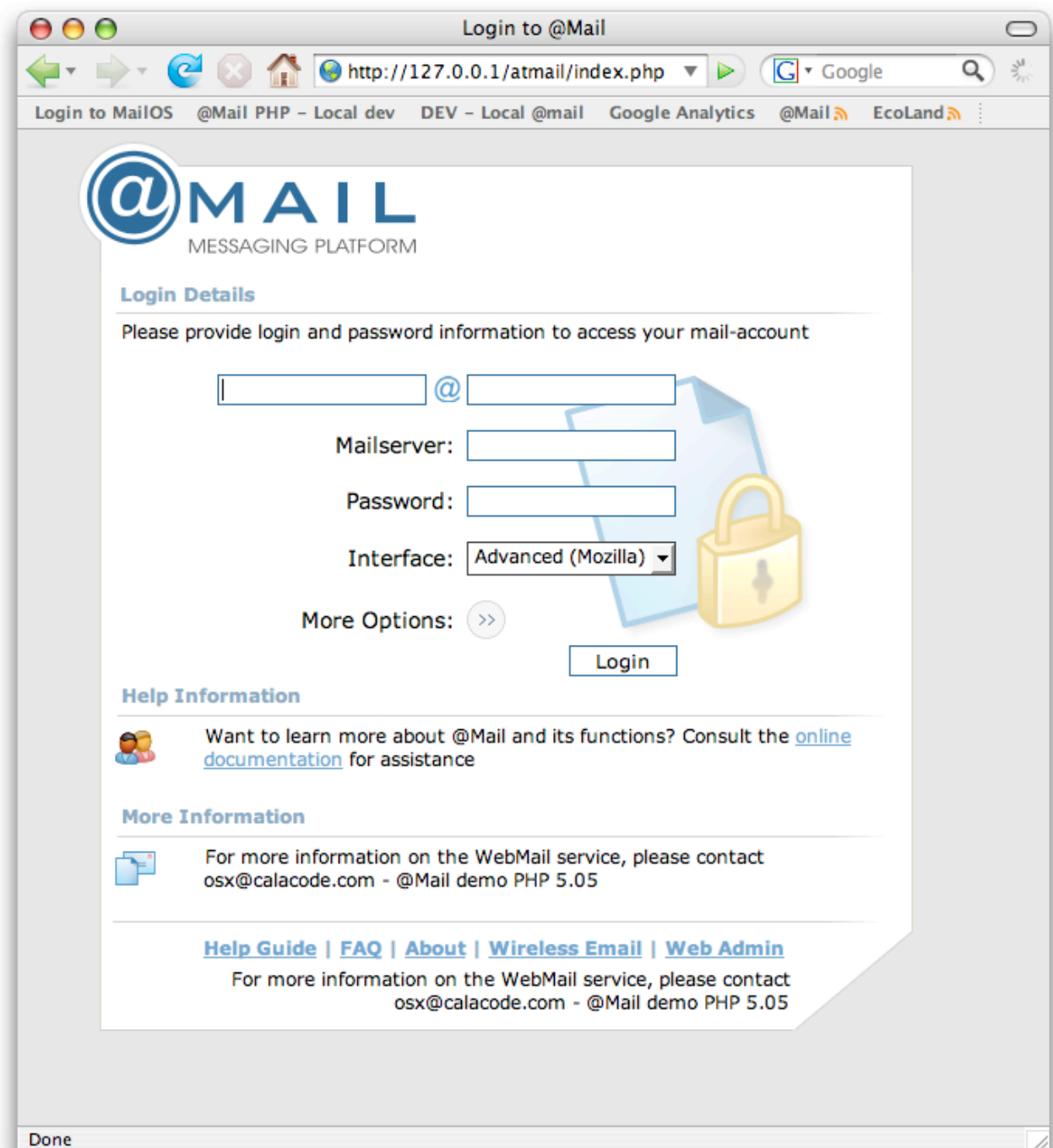
## Technical Details:

Once the MySQL installation installed you can proceed with the software installation. Once the installer is complete, @Mail will automatically launch in the Web-browser and you can begin using the software immediately.

You can access the WebMail interface of @Mail under the URL:

<http://localhost/atmail/>

Here users have the ability to login to any external POP3/IMAP mailbox.

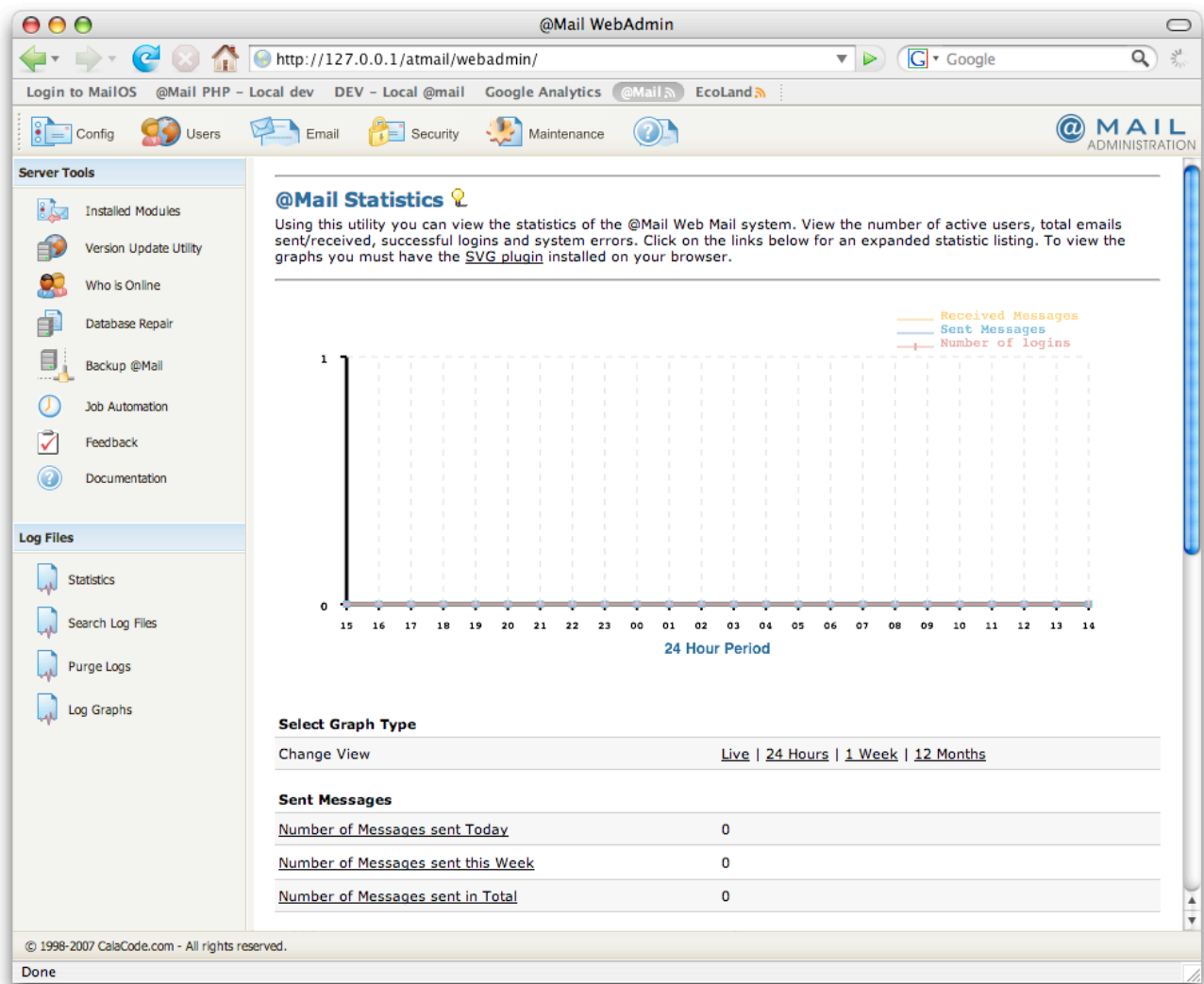


Multiple Webmail templates are provided depending on the users browser capabilities. Two main themes are included, an Advanced “desktop” interface, or a simple lightweight interface based on Ajax/Javascript.

For accessing the WebAdmin interface to control system settings use:

<http://localhost/atmail/webadmin/>

Here you can maintain the @Mail software, manage users, system settings and runtime preferences.



Full reporting and graphing utilities are provided in the Webadmin for administration purposes.

The location of the software is located under:

*/Library/WebServer/Documents/atmail/*

## @Mail Support:

For further support on @Mail please see:

<http://kb.atmail.com/> - Online Knowledge Base

<http://support.atmail.com/> - System documentation

<http://forum.atmail.com/> - Community Forum

Registered customers of @Mail can email [support@calacode.com](mailto:support@calacode.com) to receive support via email.

## Uninstall:

To uninstall @Mail mount the disk-image and via the terminal execute:

```
# cd /Volumes/@Mail/Webmail/  
# perl uninstall-atmail.pl
```

This will delete the software from the Webserver, remove the @Mail Apache configuration file and revert the PHP.ini settings for the server.